

February 2016
EMMAUS SCHOOL EXTENSION.
PLANNING PERMISSION
15/12696/FUL

Dear Supporter,

We have now been granted planning permission for an extension to our school. We hope this newsletter will give you an overview of the limitations of our current building and the facilities provided by our extension.

If you are not already familiar with existing building or wish to see the full plans and a model of the extension we would like to invite you to come to the school for our next Open Day on Saturday 25th June 2016 10am – 1pm. Alternatively, you can arrange a suitable time to visit by contacting opendays@emmaus-school.org.uk.



Currently:

- The pupils/staff and visitors use the same toilets from the 1920s
- There are no disabled toilet facilities
- There are no changing rooms when the pupils do P.E. Currently they change in the toilets
- There is no hall for the entire school to congregate easily. The current hall is used as two classrooms, photocopier room and office
- There are no dedicated rooms for food technology (cooking), science, music or art as the current space for them is also the boiler room and kitchen
- There is no staff room
- The school office is situated in a temporary portacabin in the school playground
- There is no sick bay
- Classes 1 and 2 share an out of date and decaying portacabin
- The building is not easily accessible for wheelchair users
- There are no facilities to enable the school to be an exam centre for GCSE pupils. They have to travel 15 miles to take their exams.



Emmaus
School



Despite this we operate a well-run school and pupils' achievements were highly rated in our recent inspection, but we need an extension so we can continue to operate a school that also meets the school premises standards.

The extension proposals are for:

- New early years' classroom incorporated into the school
- Two new classrooms.
- Open the hall for use as a gathering point for the school.
- New food technology classroom.
- New science/art room.
- New music practice room.
- Full disabled access throughout the school.
- Separate changing room facilities for boys and girls.
- New toilet facilities.
- New disabled toilet facilities.
- New office.
- New staff room.
- New sick bay.
- New secure storage.



SUSTAINABILITY

In a world where global warming is a real and serious issue, we take our responsibilities seriously. Thus the scheme will be designed to high environmental standards. We are looking to use solar panels, though they will be relatively unobtrusive(as the various images show).

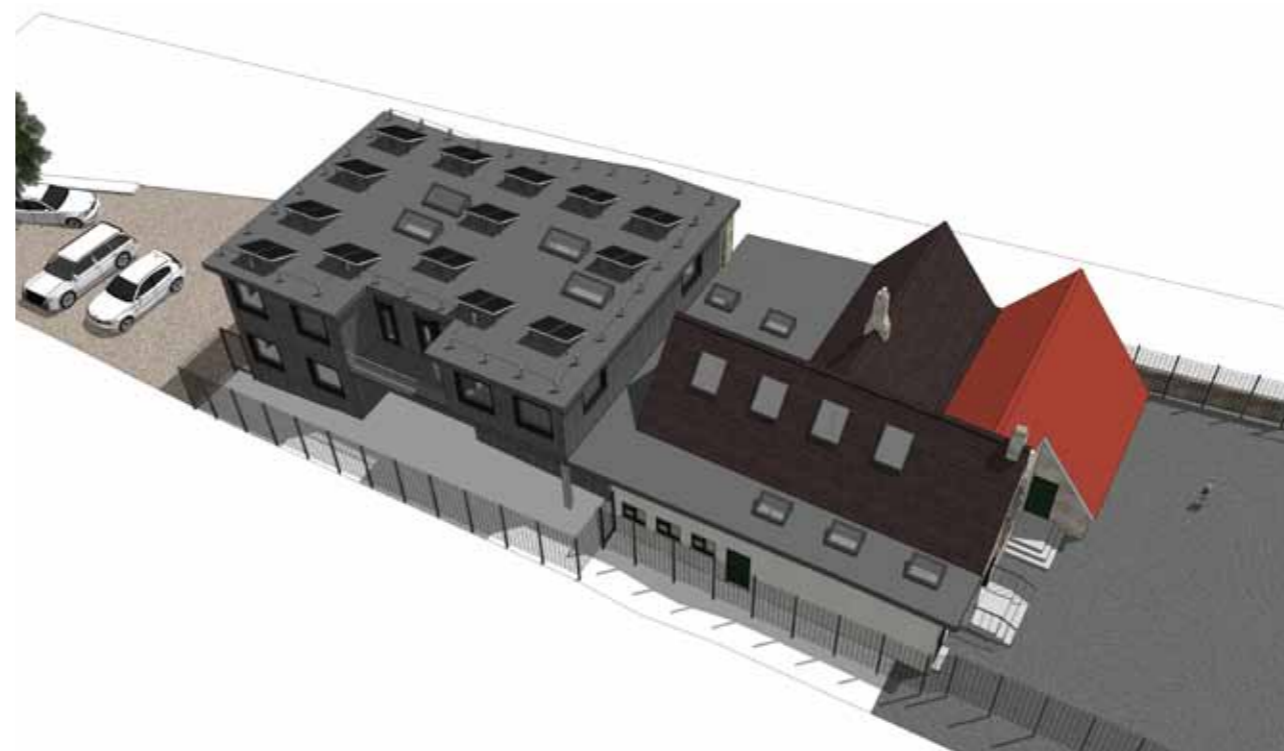


Studio 4, Stony Street Studios, 16 Stony Street, Frome, BA11 1BU
 t: 01373 455500 e:office@pa-ad.co.uk w: www.pa-ad.co.uk

GROUND FLOOR PLAN



FIRST FLOOR PLAN



ROOF PLAN



Emmaus
School

PAAD Architects
Limited

RIBA 
Chartered Practice

AECB
building knowledge

Studio 4, Stony Street Studios, 16 Stony Street, Frome, BA11 1BU
t: 01373 455500 e: office@pa-ad.co.uk w: www.pa-ad.co.uk